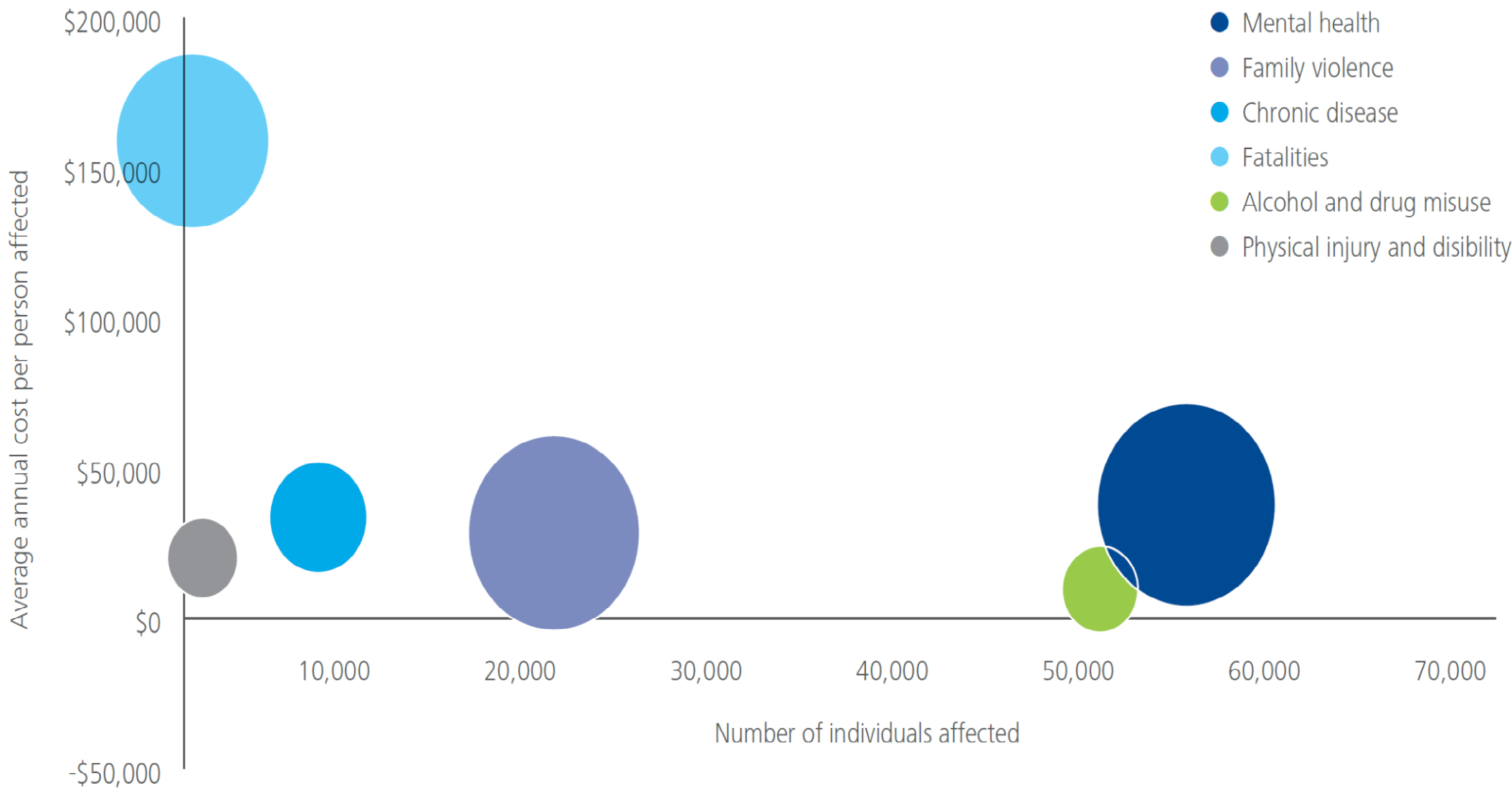


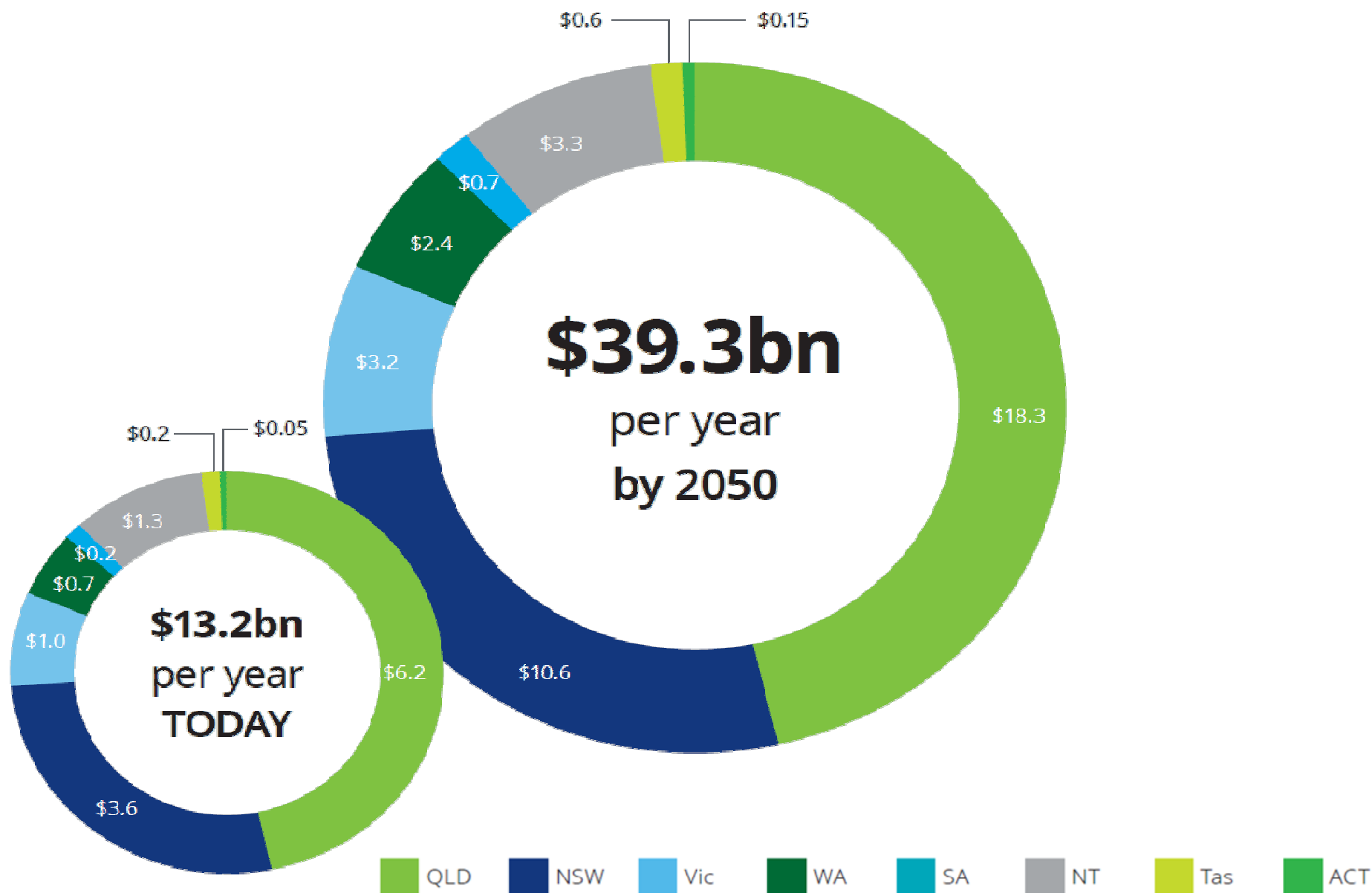
SOCIAL INTEGRATION CONTRIBUTING TO THE ECONOMIC AND SOCIAL WELL-BEING OF COMMUNITIES

Fyowna Norton
17 October 2019

Working in conjunction
with Communities,
Government, Agencies
and Business

Chart 3.2: A breakdown of the tangible and intangible costs of the Black Saturday bushfires (\$ millions)











10 Years On

Working more closely with
communities

Understanding consequence
and reducing risk

Improving capability

Strengthening emergency
management arrangements

Learning from experiences



"We shall draw from the heart of suffering itself the means of inspiration and survival."
-Sir Winston Churchill



Shared Vision
“Safer and more resilient communities”



Thank you

fyowna.norton@emv.vic.gov.au